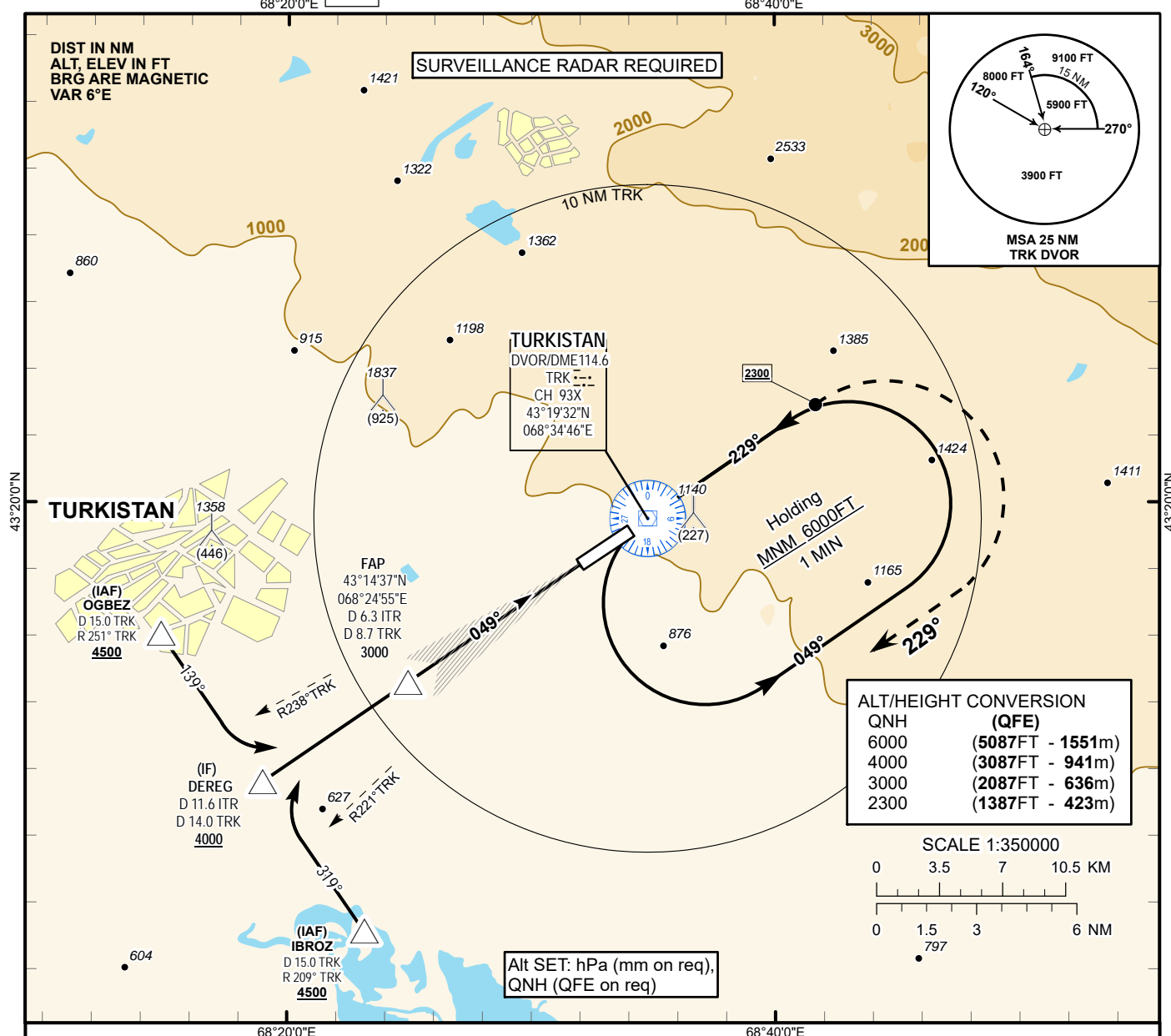


INSTRUMENT
APPROACH
CHART - ICAOILS
LLZ 110.7
ITR
GP 330.2
CH 44XAERODROME ELEV **989 FT**
HEIGHTS RELATED TO
THR RWY 05 - ELEV **913 FT**TURKISTAN TOWER 131.3
TURKISTAN ATIS (EN) 124.4
TURKISTAN ATIS (RU) 118.3TURKISTAN
ILS/DME Y
RWY 05

MISSED APPROACH

Climb on track 049°, at 2300 ft or above, turn RIGHT on track 229° climbing to 4500 ft or above, then as directed. Missed approach turn speed limited to 240 Kt IAS maximum.

IF
DEREG
D 11.6 ITR
D 14.0 TRK
4000

FAP
D 6.3 ITR
D 8.7 TRK
3000

TRANSITION ALT 10000 FT

ILS RDH 49

DVOR/DME
TRKTHR 05
ELEV 913FT

Aircraft Category		A	B	C	D	DIST to THR DME ITR	NM	6.3	5.0	4.0	3.0	2.0	1.0
Straight-in Approach OCA/H	CAT I	1113(200)	1118(205)	1128(215)	1138(225)	DME TRK	NM	8.7	7.4	6.4	5.4	4.4	3.4
						ALTITUDE	FT	3000	2576	2249	1925	1602	1281
						HEIGHT	FT	2087	1663	1336	1012	689	368

DME ITR ZERO RANGED TO THR RWY 05

Aerodrome Operating Minima DH ft x RVR(CMV)							GS	Kt	80	100	120	140	160	180
							Desc.Rate(5.2%)	ft/min	420	530	640	740	840	950

ILS/DME Y RWY05

AERONAUTICAL DATA TABULATION

ILS approach to RWY05 from IBROZ, DEREG, OGBEZ	
Fix/point	Coordinates
TRK DVOR/DME	43°19'32.3"N 068°34'46.1"E
DEREG (IF) D11.6 ITR, D14.0 TRK	43°11'37.5"N 068°18'57.1"E
(FAP) D6.3 ITR, D8.7 TRK	43°14'36.6"N 068°24'54.5"E
OGBEZ (IAF) R251°, D15.0 TRK	43°16'05.00"N 068°14'47.01"E
IBROZ (IAF) R209°, D15.0 TRK	43°07'09.8"N 068°23'06.5"E
THR RWY05	43°18'10.00"N 068°32'00.99"E
ITR LLZ	43°19'24.6"N 068°34'30.8"E